



REGIONAL SPECIALISED METEOROLOGICAL CENTRE-TROPICAL CYCLONES, NEW DELHI TROPICAL WEATHER OUTLOOK

DEMS-RSMC TROPICAL CYCLONES NEW DELHI DATED 22.12.2023

TROPICAL WEATHER OUTLOOK FOR NORTH INDIAN OCEAN (THE BAY OF BENGAL OF BENGAL AND THE ARABIAN SEA) VALID FOR NEXT 168 HOURS ISSUED AT 0600 UTC OF 22.12.2023 BASED ON 0300 UTC OF 22.12.2023.

BAY OF BENGAL:

A CYCLONIC CIRCULATION LAY OVER EQUATORIAL INDIAN OCEAN AND ADJOINING SOUTHWEST BAY OF BENGAL AND EXTENDS UPTO 3.1 KM ABOVE MEAN SEA LEVEL AT 0300 UTC OF TODAY, THE 22ND DECEMBER, 2023.

SCATTERED AND MEDIUM CLOUDS WITH MODERATE TO INTENSE CONVECTION LAY OVER EXTREME SOUTHWEST BAY OF BENGAL. SCATTERED LOW AND MEDIUM CLOUDS OVER SOUTHWEST BAY OF BENGAL.

*PROBABILITY OF CYCLOGENESIS (FORMATION OF DEPRESSION) DURING NEXT 168 HRS:

24 HOURS	24-48 HOURS	48-72 HOURS	72-96 HOURS	96-120 HOURS	120-144 HOURS	144-168 HOURS
NIL	NIL	NIL	NIL	NIL	NIL	NIL

*NOTE: EVERY 24HR FORECAST IS VALID UPTO 0300 UTC (0830 IST) OF NEXT DAY

ARABIAN SEA:

YESTERDAY'S CYCLONIC CIRCULATION OVER SOUTHEAST ARABIAN SEA LAY OVER SOUTHEAST & ADJOINING SOUTHWEST ARABIAN SEA AND EXTENDS UPTO 4.5 KM ABOVE MEAN SEA LEVEL AT 0300 UTC OF TODAY, THE 22ND DECEMBER, 2023.

SCATTERED TO BROKEN LOW AND MEDIUM CLOUDS WITH EMBEDDED INTENSE TO VERY INTENSE CONVECTION LAY OVER SOUTH ARABIAN SEA, COMORIAN AREA. SCATTERED LOW AND MEDIUM CLOUDS WITH EMBEDDED MODERATE TO INTENSE CONVECTION LAY OVER EASTCENTRAL ARABIAN SEA. SCATTERED LOW AND MEDIUM CLOUDS WITH EMBEDDED WEAK TO MODERATE CONVECTION LAY OVER NORTHEAST ARABIAN SEA GULF OF CAMBAY.

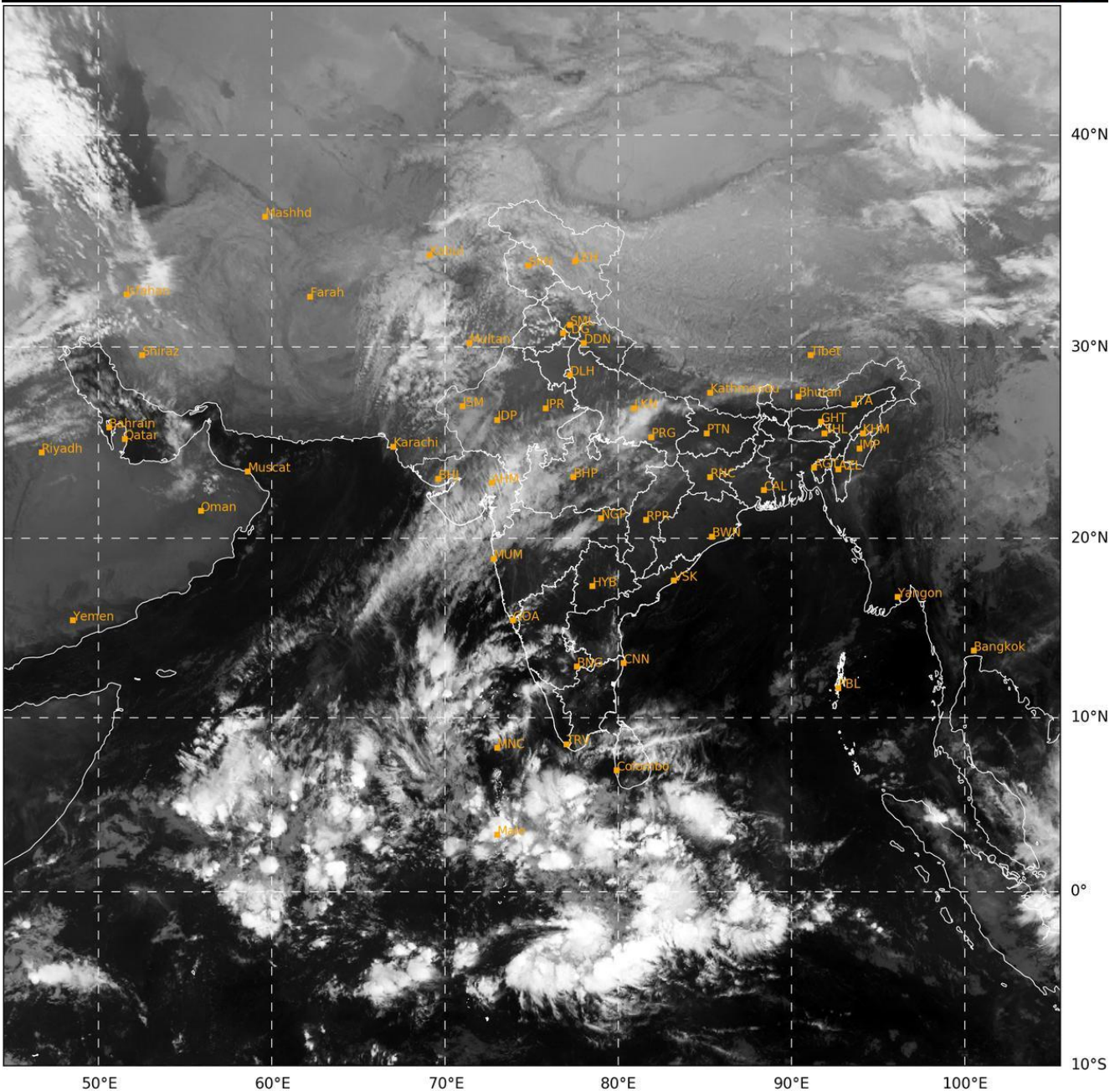
*PROBABILITY OF CYCLOGENESIS (FORMATION OF DEPRESSION) DURING NEXT 168 HRS:

24 HOURS	24-48 HOURS	48-72 HOURS	72-96 HOURS	96-120 HOURS	120-144 HOURS	144-168 HOURS
NIL	NIL	NIL	NIL	NIL	NIL	NIL

*NOTE: EVERY 24HR FORECAST IS VALID UPTO 0300 UTC (0830 IST) OF NEXT DAY

SAT : INSAT-3D IMG
 IMG_TIR1 10.8 um
 LIC Mercator

22-12-2023/(0300 to 0327) GMT
 22-12-2023/(0830 to 0857) IST



516

926

IMD, DELHI

Cloud distribution: (a) Isolated: <25%, Scattered:25-50%, Broken: 51-75%, Solid:>75%, Convection Intensity: (a) Weak: Cloud Top Temperature (CTT) >-25°C, (b) Moderate: CTT: - 25°C to -40°C, (c) Intense: CTT: - 41°C to -70°C and (d) Very Intense: : Less than -70°C
 PROBABILITY OF CYCLOGENESIS (FORMATION OF DEPRESSION):NIL: 0%, LOW: 1-33%, , MODERATE: 34-66% AND HIGH: 67-100%
 This is a guidance Bulletin for WMO/ESCAP Panel Member countries. Visit respective National websites for Country specific Bulletins